

# PATRIOT MANOR



# WELCOME

to Patriot Manor

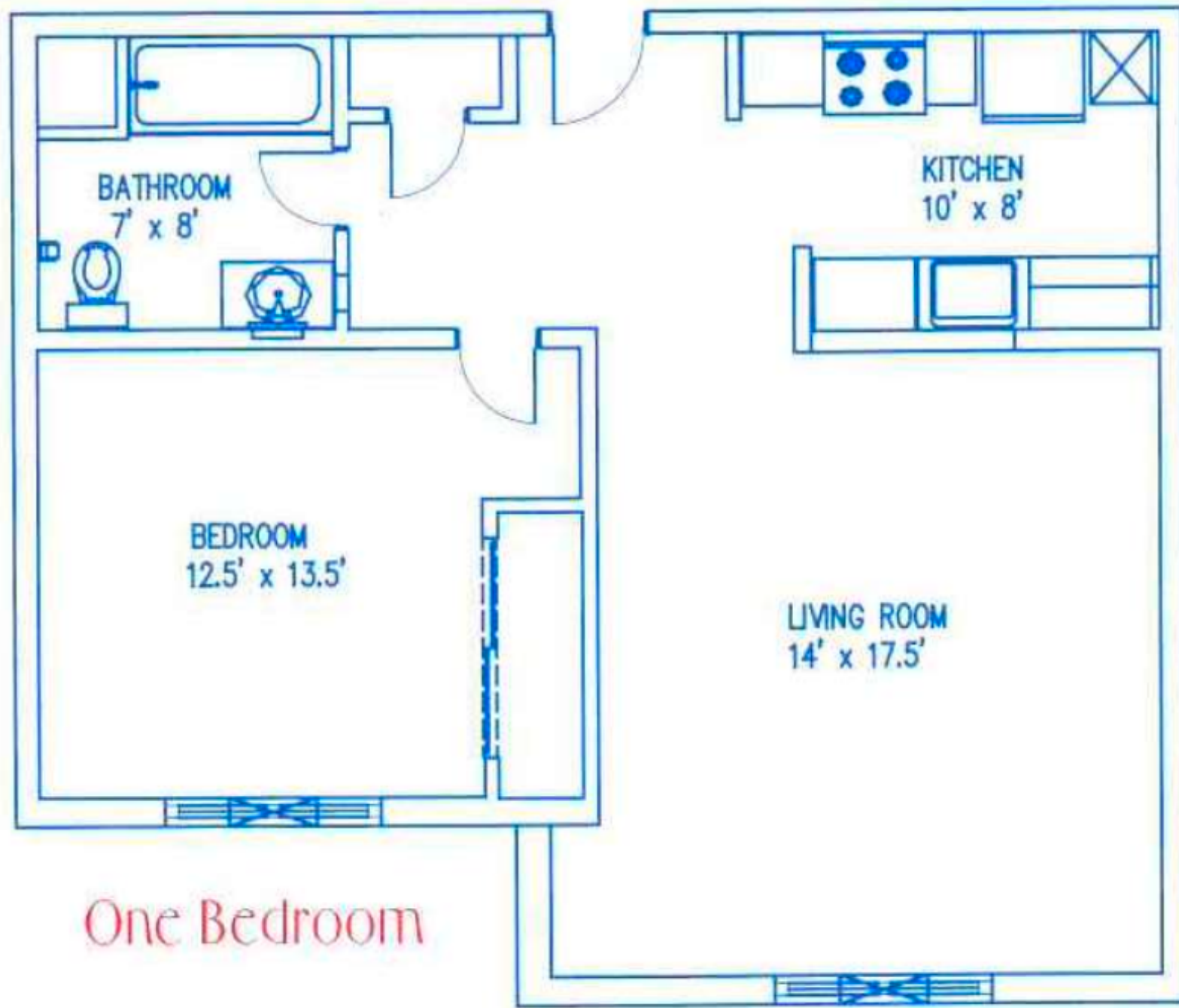
Perched atop the charming harbor of Charlotte Amalie lies St. Thomas' newest gated entry apartment complex. Embrace serenity in these expansive one, two, or three-bedroom homes, set amidst breathtaking views of Charlotte Amalie Harbor. Patriot Manor Apartments caters to residents, providing top-notch amenities such as a spacious communal area, high-speed internet access, and a stunning great room. Its prime location and serene ambiance combine to offer a unique living experience.



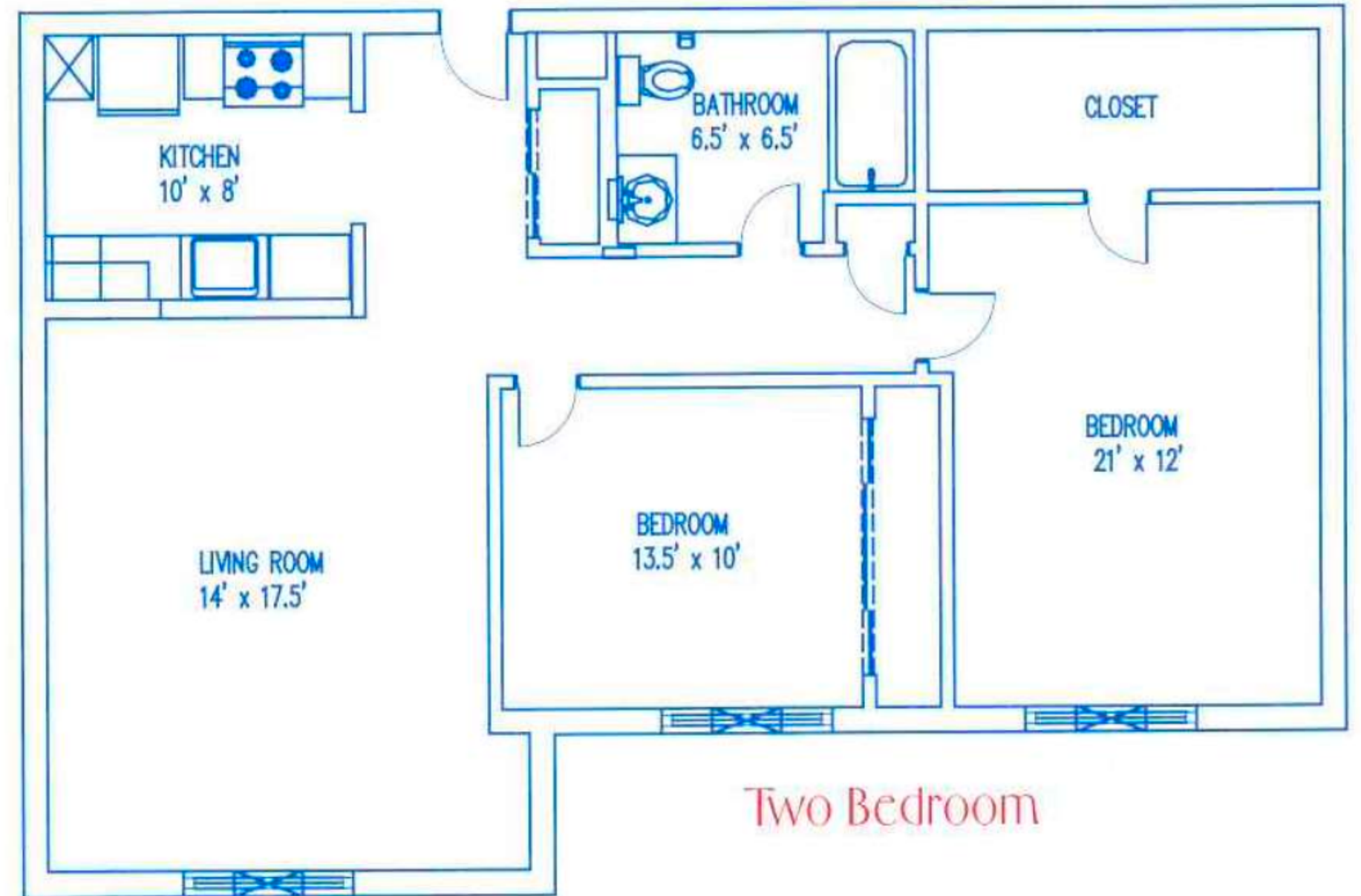
# APARTMENT & COMMUNITY AMENITIES

- Spectacular Views of Charlotte Amalie Harbor
- 3 Bedroom Bungalow Apartments
- 24 Hour Emergency Maintenance
- Central Laundry Facilities

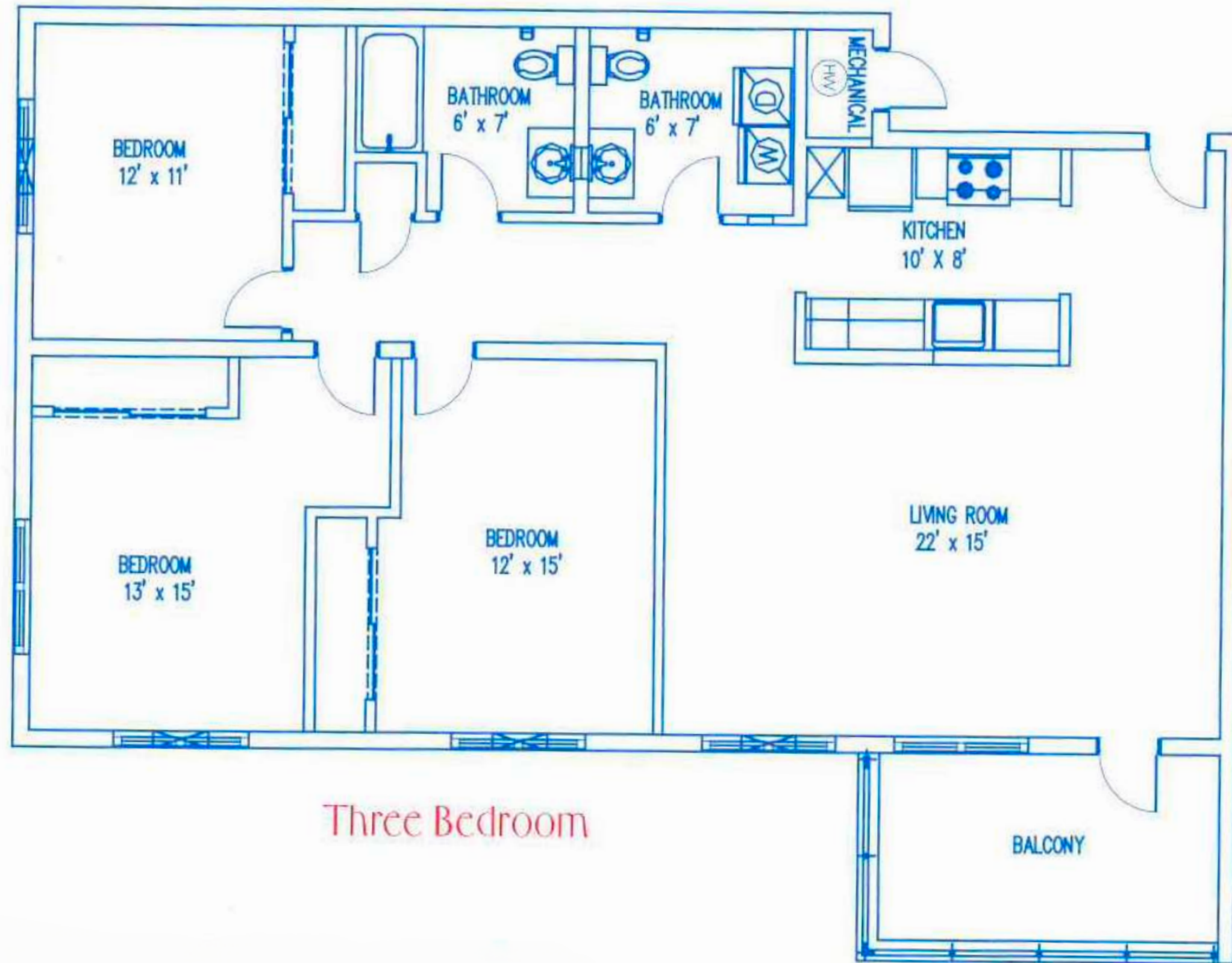




One Bedroom



Two Bedroom



Three Bedroom

# CONTACT US

Amalie Point Drive  
Phone: 340.776.7723  
Fax: 340.777.7743  
[www.wbhomes.com](http://www.wbhomes.com)

Community Housing Corporation  
Veterans Resource & Development Inc.  
Wilder Balter Partners, Inc.

