



# WOODCREST

E S T A T E S

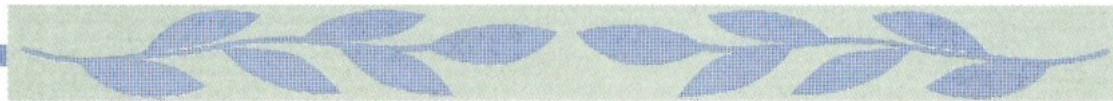


QUALITY LIVING FOR SENIORS

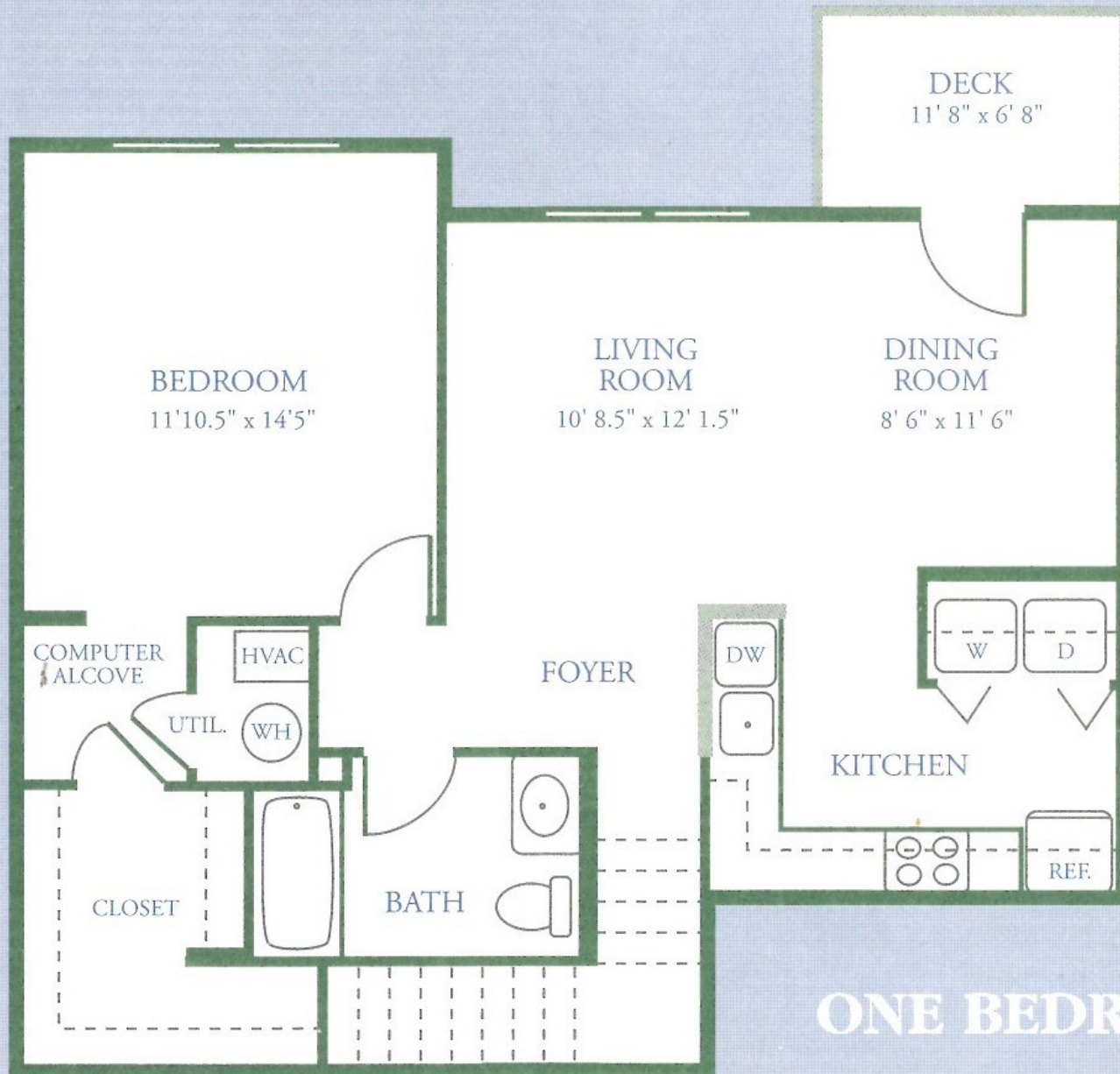


W E L C O M E T O  
**WOODCREST**  
E S T A T E S

Nestled among 45 acres of trees in a private wooded setting, Woodcrest Estates is Brookhaven's premier senior community. Woodcrest Estates couples the beauty of its' natural landscaping with the convenience of nearby access to shopping, theaters and downtown Port Jefferson on the Sound.



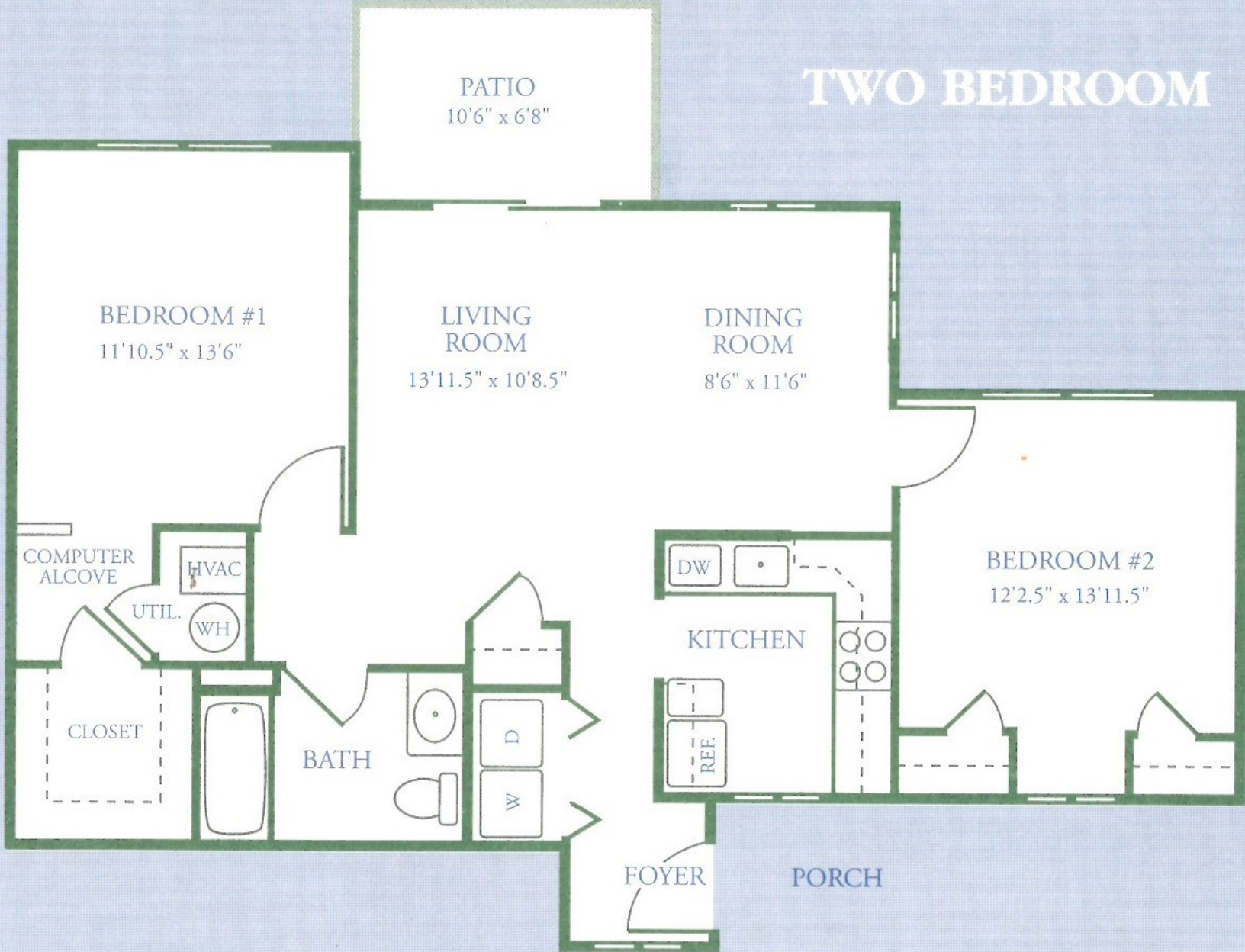




**ONE BEDROOM**



# TWO BEDROOM



## Apartment Amenities:

- Large Bedrooms with Fabulous Walk-In Closets
- Private Patios and Balconies
- Energy Efficient Gas Heat and Hot Water
- Central Air Conditioning
- Designer Kitchens with Wood Cabinetry
- GE Gas Oven, Dishwasher and Frost Free Refrigerator
- Side by Side Washer Dryer Hookups
- Cable Ready

## Community Amenities:

- 25' x 50' Swimming Pool
- Fitness Facility
- Library and Card Room
- Fully Equipped Kitchen Available for Catering Private Parties
- Billiard Room
- Convenient Laundry Facilities
- Hearth Room
- Community Garden



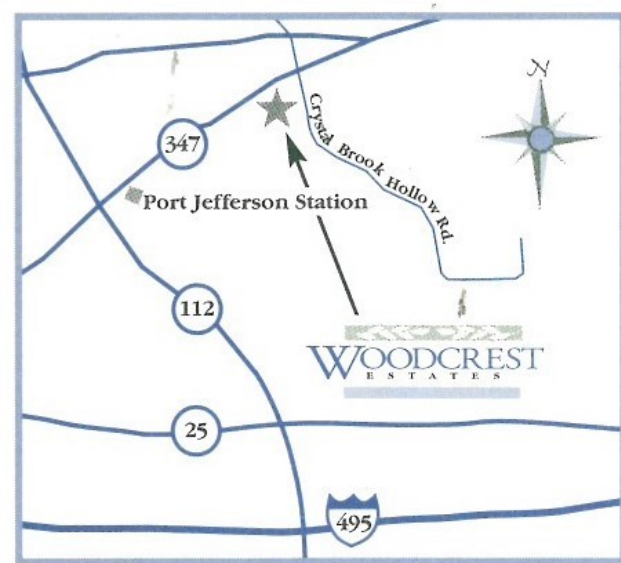
*Developed by Wilder Balter Partners, LLC  
Managed by Wilder Richman Management Corporation*





# WOODCREST ESTATES

100 Woodcrest Drive  
Port Jefferson Station, New York 11776  
Phone 516.473.4114  
Fax 516.642.0737



**DIRECTIONS:**

Take the Long Island Expressway to exit 64 (Rte.112). At the end of the exit turn left and head north on Rte.112 for approximately 5 miles. Turn right onto Rte.347 heading east. Woodcrest Estates will be on your right hand side just before Crystal Brook Hollow Road.