

PatriotMANOR

Apartment Amenities

- Ceramic Tile Throughout
- Air Conditioner Sleeves and Ceiling Fans
- Sprinklers and Smoke Detectors
- Cable Ready TV Connection
- Spectacular Views of Charlotte Amalie Harbor

Community Amenities

- Community Room with Kitchen, Great Room, and Internet Access
- Elevators in Main Building
- On Site Management Office
- 24 Hour Emergency Maintenance
- Central Laundry Facilities
- Gated Entry
- Private Entrances in Bungalow Buildings

Welcome to Patriot Manor

Tucked high above the picturesque harbor

Of Charlotte Amalie is St. Thomas' newest

Gated entry apartment community. These

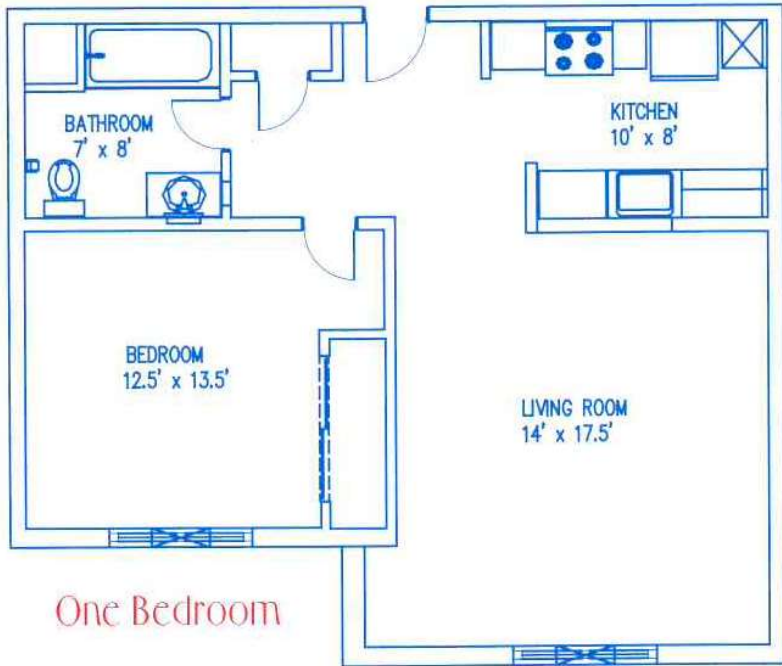
Spacious apartment homes with one, two, or three bedrooms offer a tranquil setting.

With spectacular views of Charlotte Amalie Harbor as it's backdrop, Patriot Manor Apartments

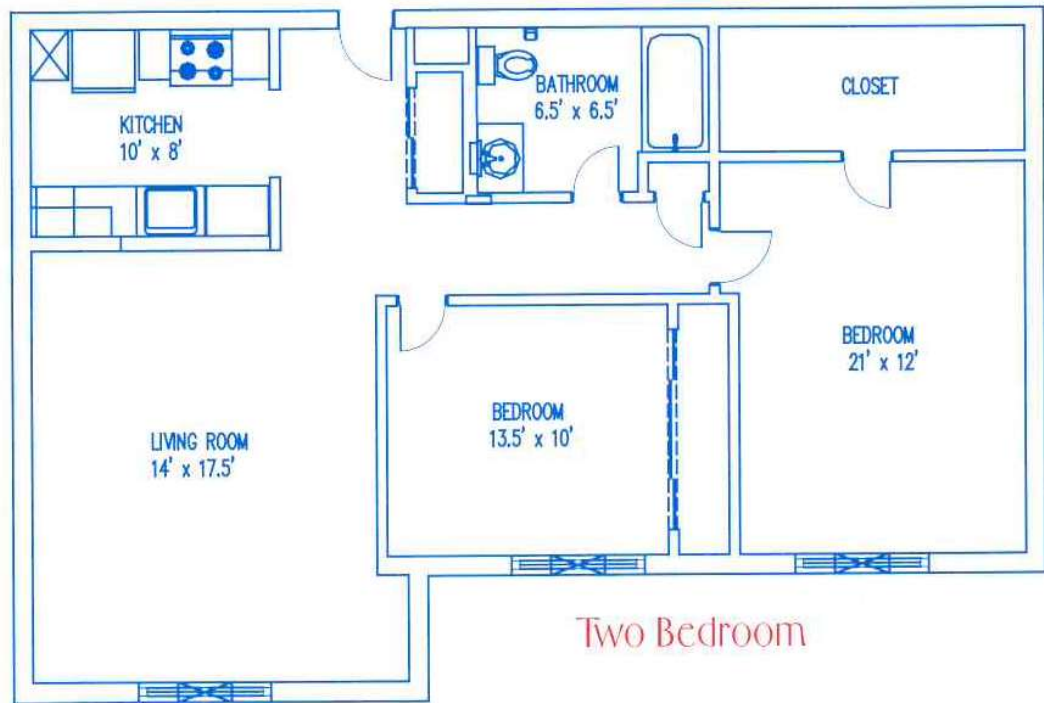
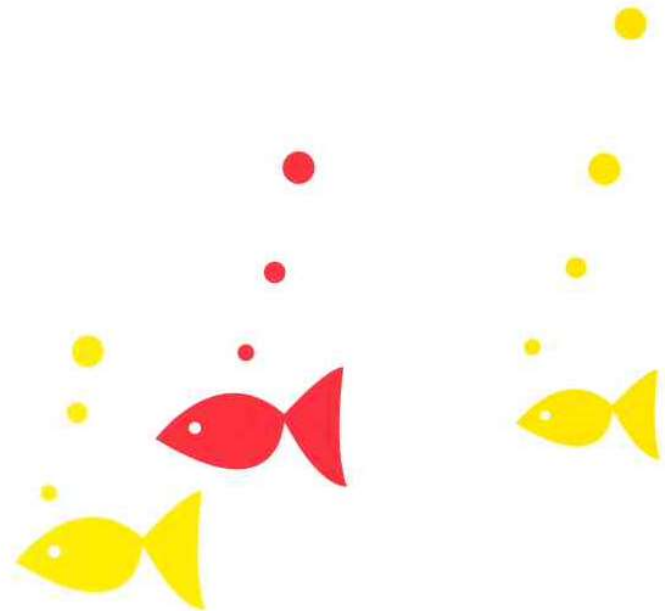
offers its Residents quality amenities, including a large community room,

internet access and a beautiful great room. Its convenient location and

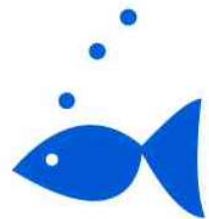
serene surroundings deliver a unique living experience.

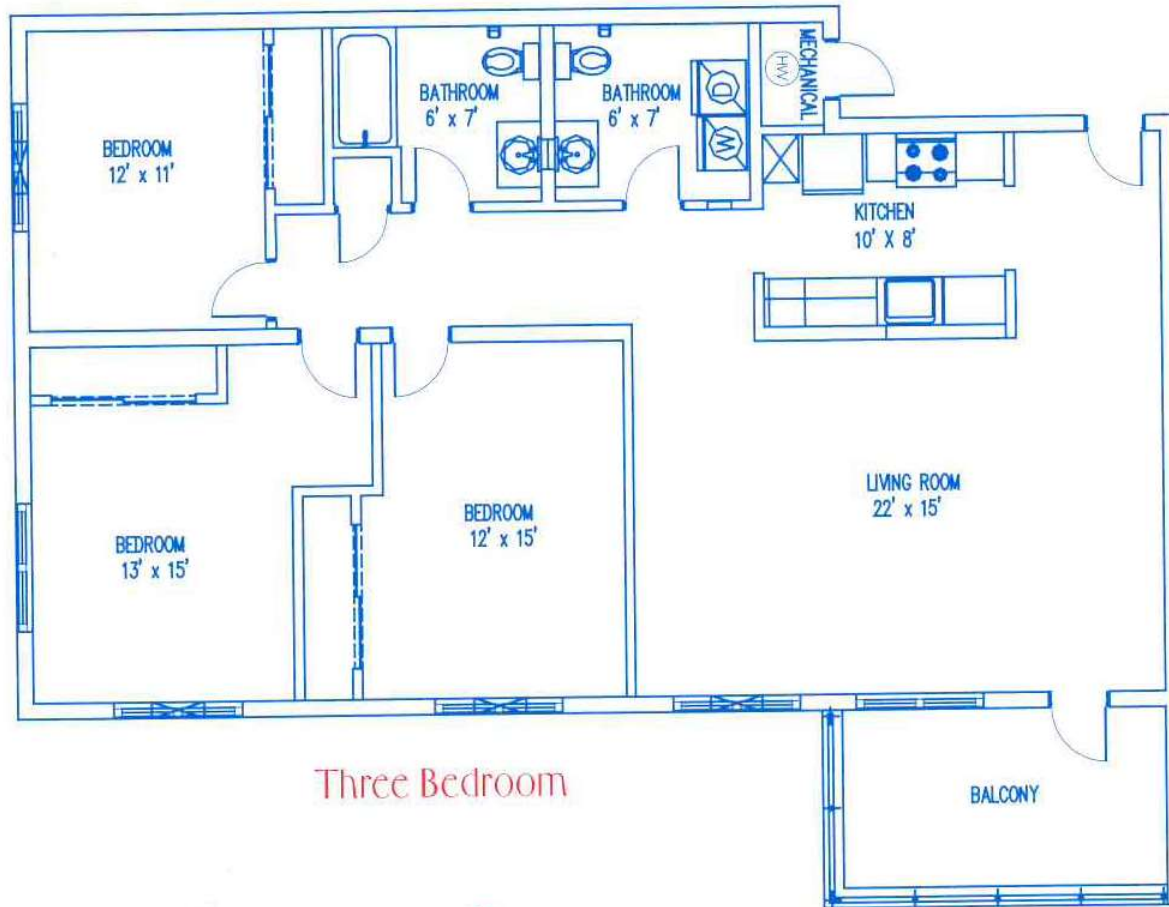


One Bedroom



Two Bedroom





Three Bedroom



PatriotMANOR

Amalie Pointe Drive
phone: 340.776.7723
fax: 340.777.7743
www.wbhomes.com



Community Housing Corporation
Veterans Resource & Development, Inc.
Wilder Baller Partners, Inc.