

BRIDLESIDE

A P A R T M E N T S



**WESTCHESTER COUNTY
FAIR AND AFFORDABLE RENTAL APARTMENTS
NORTH SALEM, NEW YORK**



ABOUT THE COMMUNITY

Nestled among 40 acres of trees in a private wooded setting, Bridleside Apartments is Northern Westchester's premier affordable community in North Salem, NY. Bridleside couples the beauty of its natural landscaping with shopping nearby in Brewster and Danbury, Ct. The Metro North Station in Croton Falls is 5 minutes away and the Northern Westchester Hospital and Putnam Hospital Center are less than 15 minutes away. North Salem's award winning schools are within walking distance of Bridleside Apartments.

ABOUT BRIDLESIDE APARTMENTS

Bridleside Apartments consists of 8 apartment buildings with 8 apartments per building for a total of 64 rental apartments plus 1 superintendent apartment; 20 one-bedroom apartments with an average of 850 SF, 40 two-bedroom apartments with an average of 1,025 SF and 5 three-bedroom apartments with an average of 1,285 SF.

Apartment Amenities

- Large Bedrooms Including Walk-In Closets
- Private Patios and Balconies
- Heat and Hot Water Included
- Tenant Controlled Air Conditioning
- Washer-Dryer Hookups
- Appliances Include:
 - Electric Stove
 - Dishwasher
 - Refrigerator with Ice Maker

Community Amenities

- Clubhouse Facility Including:
 - Fitness Center
 - Library and Card Room
 - Fully-Equipped Kitchen
 - Central Laundry Facilities
- Bridleside Van Service to Train Station and Other Local Destinations
- Adjacent to Volunteer Park
- On Site Walking Trails
- Short Walk to North Salem Schools
- Enclosed Field Area



North Salem Middle/High School



Danbury Fair Mall

BRIDLESIDE

A P A R T M E N T S



Town Offices, North Salem, NY



Titicus Reservoir



Putnam Hospital Center



Clubhouse

Bridleside Apartments

256-258 June Road
North Salem, New York 10560

Phone: 914.332.4144

Email: hac@affordablehomes.org

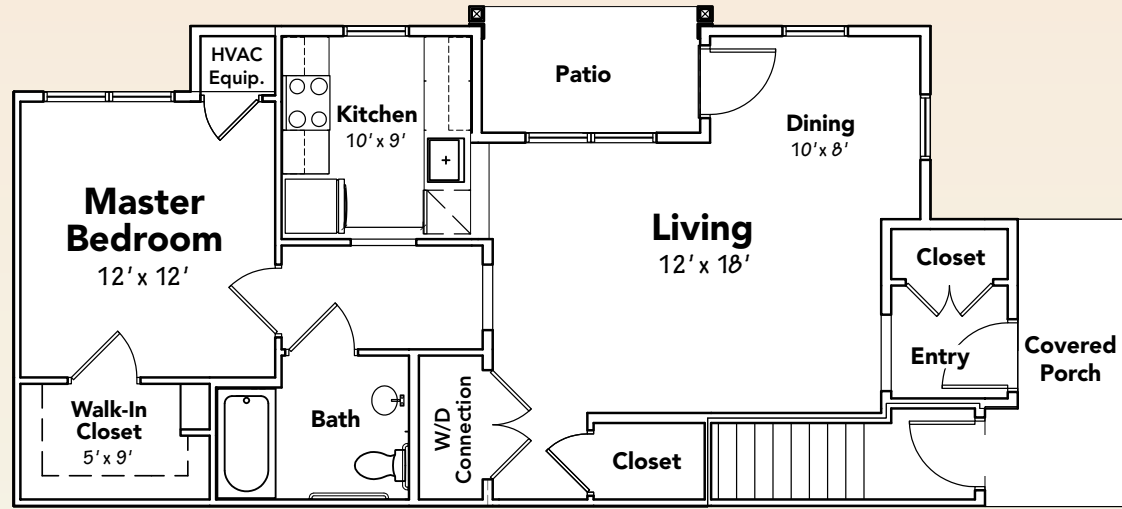
Internet: www.bridleside.com

Developed by Wilder Balter Partners, Inc. and the Housing Action Council. Managed by WB Residential Communities, Inc.

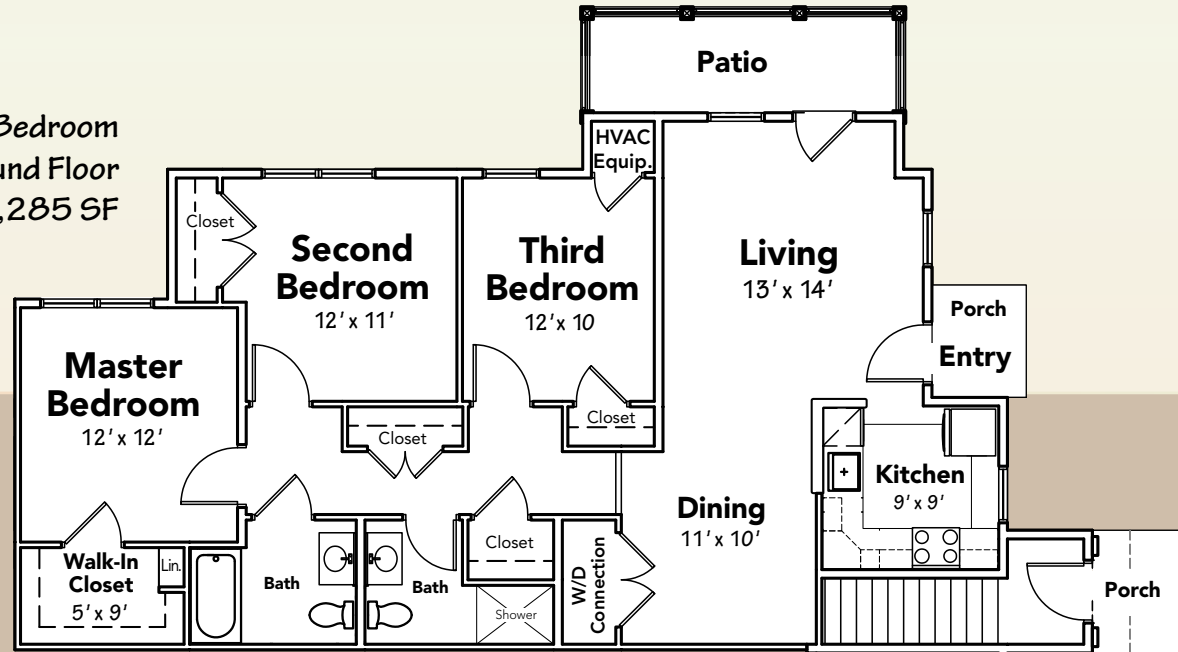


Floor Plans

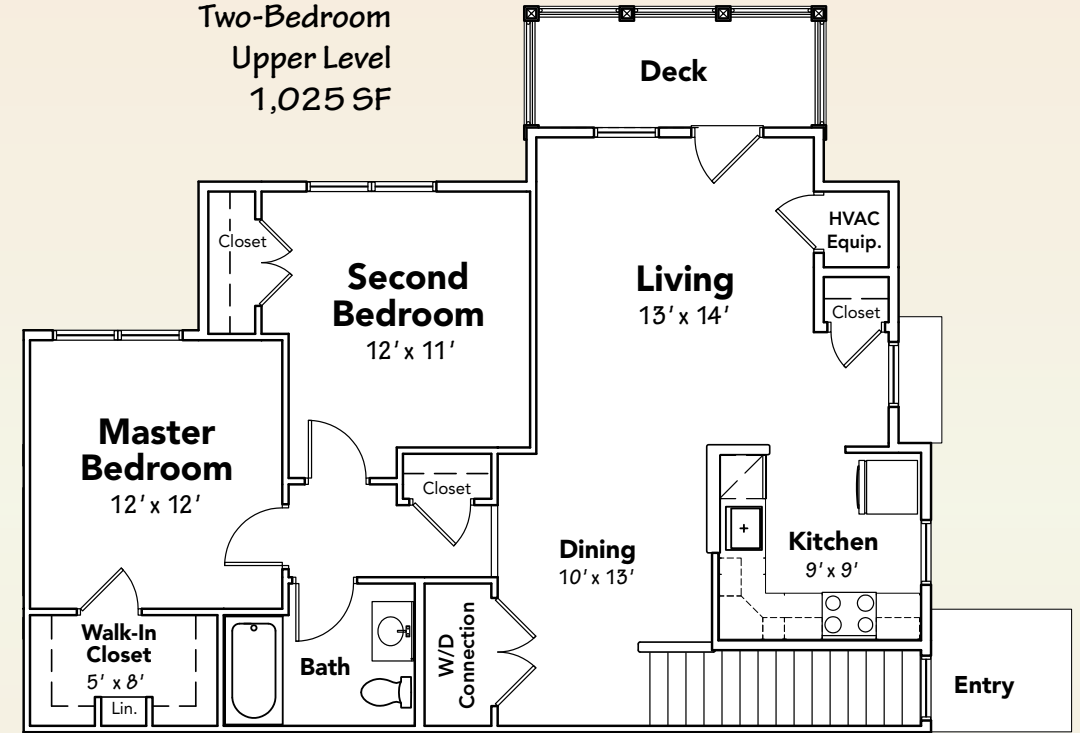
One-Bedroom
Ground Floor
842 SF



Three-Bedroom
Ground Floor
1,285 SF



Two-Bedroom
Upper Level
1,025 SF



BRIDLESIDE

A P A R T M E N T S

Floor plans are for illustrative purposes only



Bridleside Apartments ♦ North Salem, New York

For more information about Wilder Balter Partners and Housing Action Council, visit us at www.wbhomes.com and www.housingactioncouncil.org



Housing Action Council

Wilder Balter
PARTNERS INC.



BRIDLESIDE
A P A R T M E N T S

BRIDLESIDE
A P A R T M E N T S

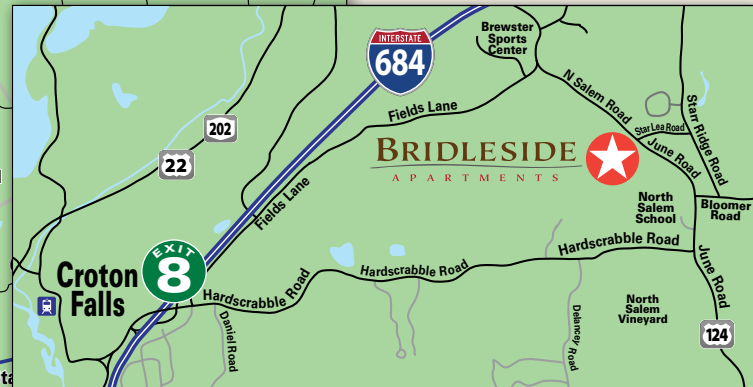
To obtain an application or for additional information:

Phone: 914.332.4144 • Email: hac@affordablehomes.org

Internet: www.bridleside.com or www.housingactioncouncil.org

BRIDLESIDE

A P A R T M E N T S



Directions from New York City and points South: 1) Take the Henry Hudson Parkway North, which becomes the Saw Mill River Parkway North. 2) Follow the Saw Mill River Parkway which becomes I-684 North. 3) Take Exit 8 (Hardscrabble Rd.) and then turn right. 4) Follow Hardscrabble Rd. 3 miles to June Rd. 5) Make left onto June Rd. and follow .7 miles to community on left just past North Salem High School (opposite Star Lea Rd.).

Directions from Fishkill and points North: 1) Take I-84 East to I-684 South. 2) Take Exit 8 (Hardscrabble Rd.) and then turn right. 3) Follow Hardscrabble Rd. 3 miles to June Rd. 4) Make left onto June Rd. and follow .7 miles to community on left just past North Salem High School (opposite Star Lea Rd.).

Bridleside Apartments

256-258 June Road
North Salem, New York 10560

Phone: 914.332.4144

Email: hac@affordablehomes.org

Internet: www.bridleside.com

BRIDLESIDE

A P A R T M E N T S

**WESTCHESTER COUNTY
FAIR AND AFFORDABLE RENTAL APARTMENTS
NORTH SALEM, NEW YORK**

Income Qualifications and Guidelines

4 One Bedroom Apartments (50%)

\$979 per month Rent (Includes heat and hot water)

\$36,500 Maximum Income 1 Person Household

\$41,700 Maximum Income 2 Person Household

16 One Bedroom Apartments (60%)

\$1,182 per month Rent (Includes heat and hot water)

\$43,800 Maximum Income 1 Person Household

\$50,040 Maximum Income 2 Person Household

8 Two Bedroom Apartments (50%)

\$1,171 per month Rent (Includes heat and hot water)

\$41,700 Maximum Income 2 Person Household

\$46,900 Maximum Income 3 Person Household

\$52,100 Maximum Income 4 Person Household

32 Two Bedroom Apartments (60%)

\$1,414 per month Rent (Includes heat and hot water)

\$50,040 Maximum Income 2 Person Household

\$56,280 Maximum Income 3 Person Household

\$62,520 Maximum Income 4 Person Household

1 Three Bedroom Apartment (50%)

\$1,351 per month Rent (Includes heat and hot water)

\$46,900 Maximum Income 3 Person Household

\$52,100 Maximum Income 4 Person Household

\$56,300 Maximum Income 5 Person Household

\$60,450 Maximum Income 6 Person Household

3 Three Bedroom Apartments (60%)

\$1,631 per month Rent (Includes heat and hot water)

\$56,280 Maximum Income 3 Person Household

\$62,520 Maximum Income 4 Person Household

\$67,560 Maximum Income 5 Person Household

\$72,540 Maximum Income 6 Person Household

Housing Action Council
55 South Broadway Tarrytown, NY 10591

Phone: (914) 332-4144

Email: hac@affordablehomes.org

www.housingactioncouncil.org

Rents/Income Limits are subject to change.